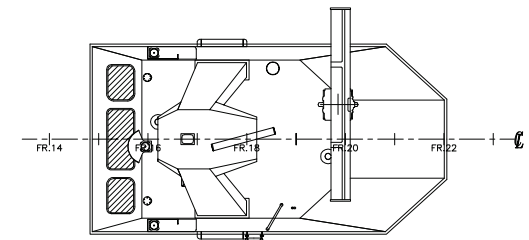
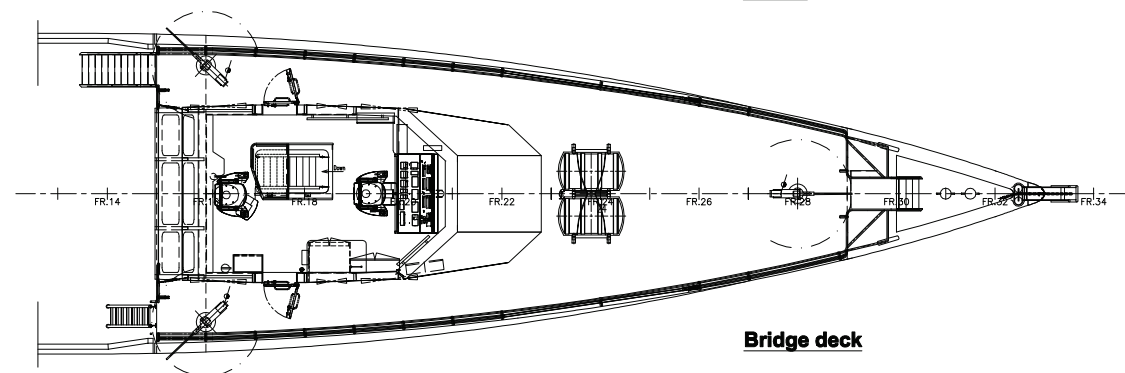


Profile



Top of wheelhouse

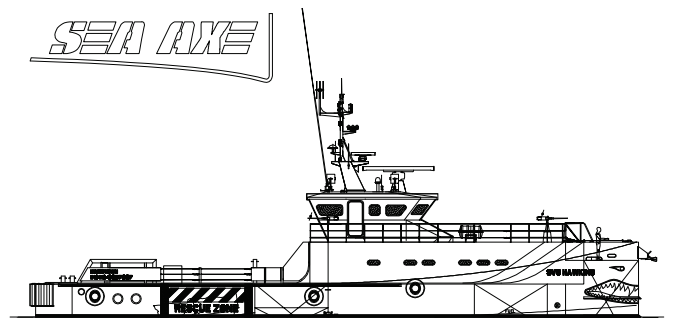


Bridge deck

Damen

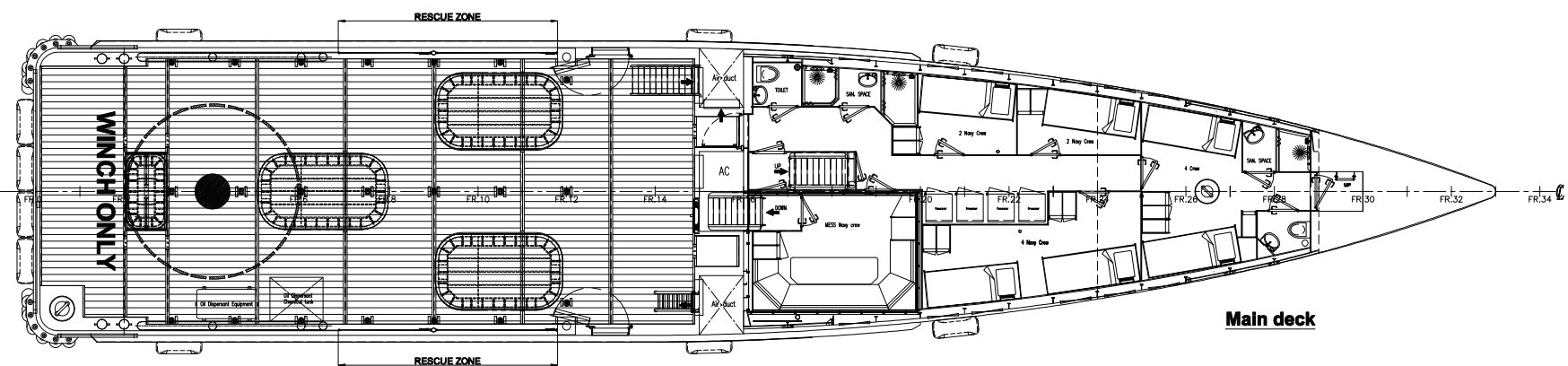
FCS[®] 3307 Patrol

SEA AXE

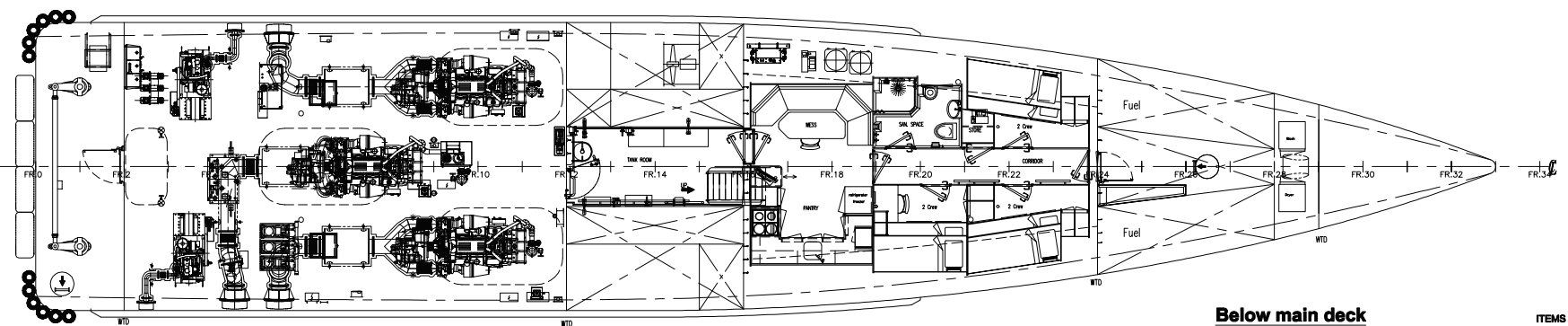


Principal dimensions:

Length o.a.	33.32 m
Beam o.a.	7.35 m
Depth at sides	3.30 m
Draught aft (approx.)	1.95 m

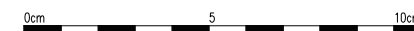


Main deck



Below main deck

ITEMS MARKED / ARE OPTIONAL EQUIPMENT



C	04-04-2012	Mukul		As-Built	
B	08-02-2012	gk	mk	Deleted wash bowl; added 2nd boiler, RC; updated oil spill tank.	
A	23-11-2011	gk	mk	Updated top deck, WH, FO separator, etc.	
REV	DATE	DRWN	CHKD	APPRVD	REVISION SUBJECT
approved	date				
DAMEN SHIPYARDS					
Avelingen West 20 - 4202 MS Gorinchem Tel. : + 31-183-639911* P.O.Box 1 - 4200 AA Gorinchem Telefax : + 31-183-632189 Holland Telex : 25335 dame nl					
General Arrangement					
drawn : O. Haga pls/plw : date : 14-09-2011 A1 ACAD S			ship type : Fast Crew Supplier 3307 yardnumber(s) : derived fr. drwg. no. : drwg. no. : FCS 3307-0000/p236717		

The information and data contained herein are proprietary to Damen Shipyards and are not to be copied, reproduced, duplicated or disclosed to others, in whole or in part without prior written consent of Damen Shipyards.